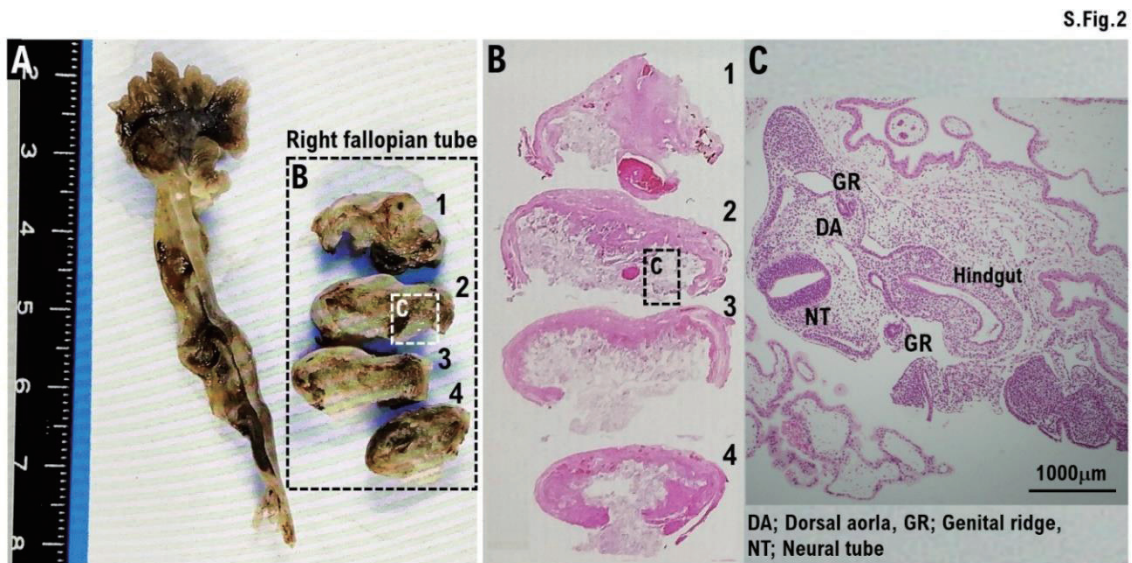


Suppl 3. Clinical findings described by histopathological imaging examinations. A. Gross findings of excised tissue of right fallopian tube by surgical treatment is shown in the panel A. B. Clinical findings described by the histopathological imaging examination is shown in the panel B. The clinical evidence of the ectopic pregnancy in right fallopian tube is shown in the panel B. The location of fetus from ectopic pregnancy at growth period in right fallopian tube is indicated by white dotted square line in the panel A and black dotted square line in the panel B. C. Detailed histological features of fetus from ectopic pregnancies is shown in the panel C. The histological features of fetus observed at growth period, i.e., dorsal aorta (DA), genital ridge (GR), hindgut and neural tube (NT) are shown in the panel C.



References

8. Soundravally R, Krishna Latha T, Soundara Raghavan S, Ananthanarayanan PH, Srilatha K. Diagnostic significance of total creatine kinase and its isoform in tubal ectopic pregnancy. *J Obstet Gynaecol Res.* 2013 Dec;39(12):1587-91. doi: [10.1111/jog.12109](https://doi.org/10.1111/jog.12109).
11. Dubbewar A, Srivastava A, Hiremath RN, Ghodke S, Chourey N, Sreenivas A. A rare case of spontaneous heterotopic pregnancy with intrauterine gestational trophoblastic neoplasia and tubal ectopic pregnancy at a remote secondary care hospital. *J Family Med Prim Care.* 2022 Jul;11(7):3996-3998. doi: [10.4103/jfmpe.jfmpe_2448_21](https://doi.org/10.4103/jfmpe.jfmpe_2448_21).
12. Peker N, Aydeniz EG, Gündoğan S, Şendağ F. Laparoscopic Management of Heterotopic Istmocornual Pregnancy: A Different Technique. *J Minim Invasive Gynecol.* 2017; 24(1): 8-9. doi: [10.1016/j.jmig.2016.07.008](https://doi.org/10.1016/j.jmig.2016.07.008).
14. Hashimoto R. Development of the human Müllerian duct in the sexually undifferentiated stage. *Anat Rec A Discov Mol Cell Evol Biol.* 2003; 272(2): 514-519. doi: [10.1002/ar.a.10061](https://doi.org/10.1002/ar.a.10061).
15. Wrobel KH. The genus *Acipenser* as a model for vertebrate urogenital development: the müllerian duct. *Anat Embryol (Berl).* 2003; 206(4): 255-271. doi: [10.1007/s00429-002-0287-0](https://doi.org/10.1007/s00429-002-0287-0)
16. Neycheva S, Naseva E, Batalov Z, Karalilova R, Batalov A. Adherence to biological therapies in patients with rheumatoid arthritis: a retrospective cohort study. *Rheumatol Int.* 2023 Jul;43(7):1287-1296. doi: [10.1007/s00296-023-05327-0](https://doi.org/10.1007/s00296-023-05327-0).